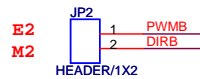
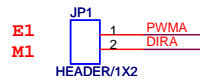
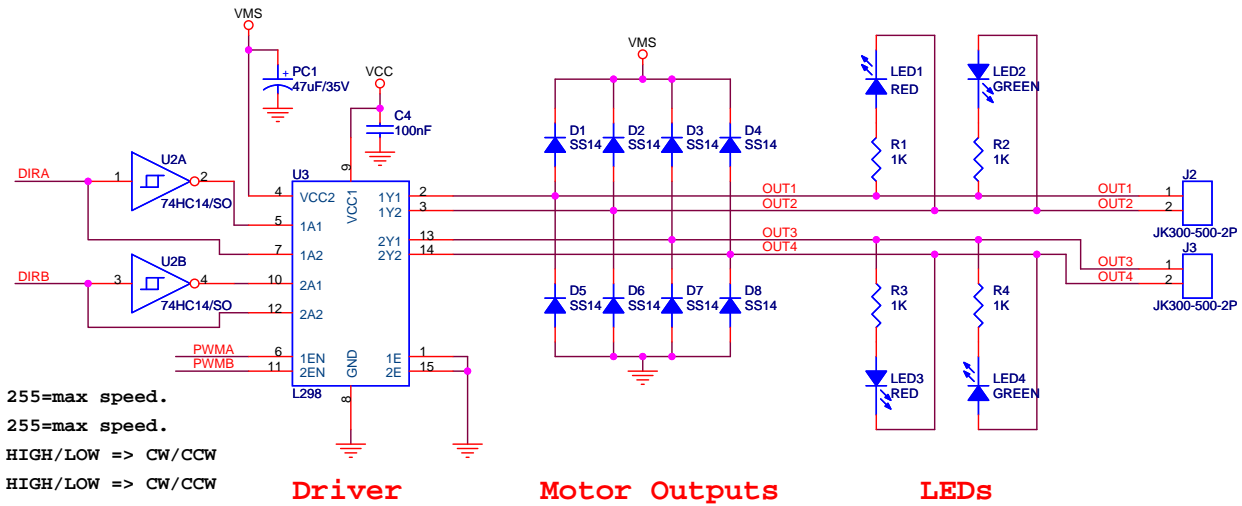


# DC Motor Module(L298)



## Motor Control Pins

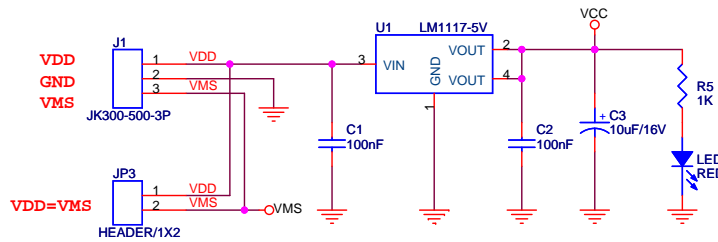
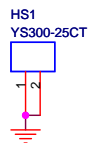
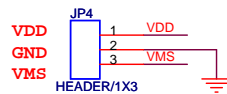
- E1** PWM A : PWM Control. 0=off, 255=max speed.
- E2** PWM B : PWM Control. 0=off, 255=max speed.
- M1** DIR A : Rotation Direction. HIGH/LOW => CW/CCW
- M2** DIR B : Rotation Direction. HIGH/LOW => CW/CCW



**Driver**

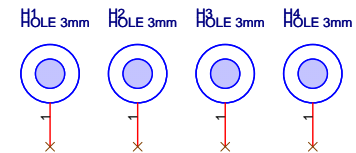
**Motor Outputs**


**LEDs**



## Power Input

- VDD:** Power Supply 6.5V-12V
- VMS:** Motor Power Supply 4.8V-46V



NEROTECH		
NA3510, 1258, ChungAngCirculation Complex Gurobong-dong, Guro-Gu, Seoul, Korea		
		
Title <b>DC Motor Module(L298)</b>		
Size B	Document Number DCMOT-L298	Rev A
Date:	Tuesday, November 24, 2015	Sheet 1 of 1