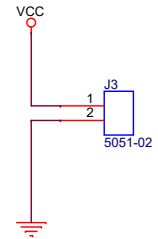
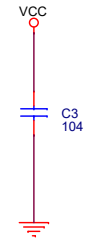
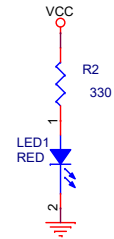
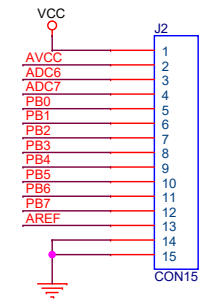
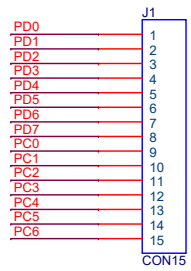
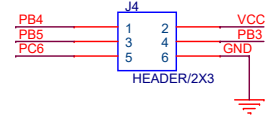
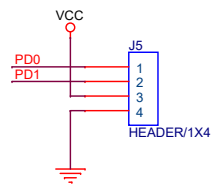



ATMEGA8-AU  
**ATMEGA48PA-AU**  
**ATMEGA88PA-AU**  
**ATMEGA168PA-AU**  
**ATMEGA328PA-AU**



<b>NEROTECH</b> NA3510, 15, Gyeongin-ro 53-gil Guro-Gu, Seoul, Korea			 <small>nero technology</small>
Title <b>ATMEGA8 BOARD V2.2</b>			
Size B	Document Number ATMEGA8 BOARD V2.2	Rev C	
Date: Monday, December 28, 2020			
Sheet	1	of 1	