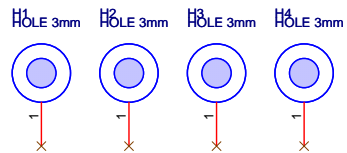
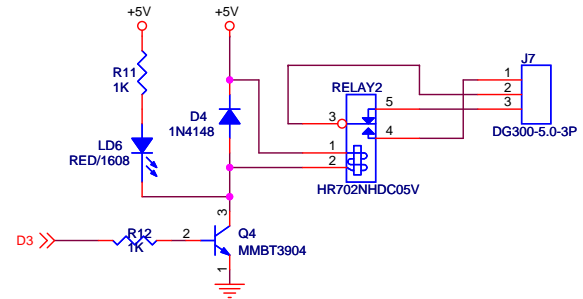
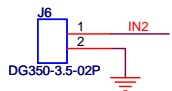
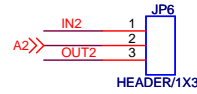
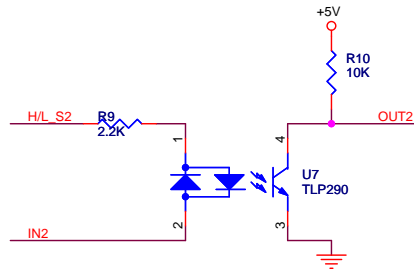
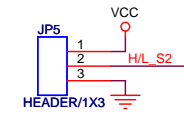
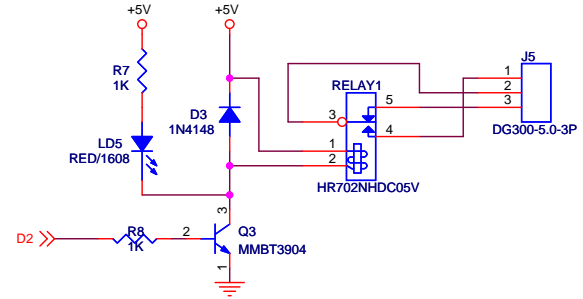
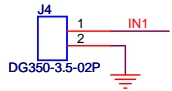
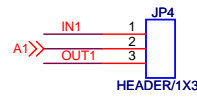
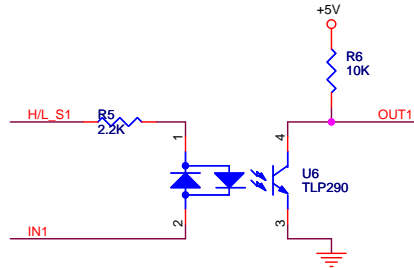
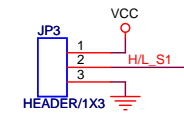
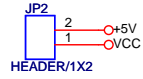
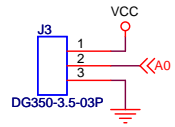

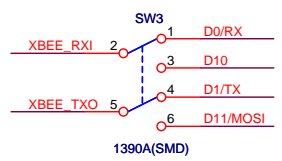
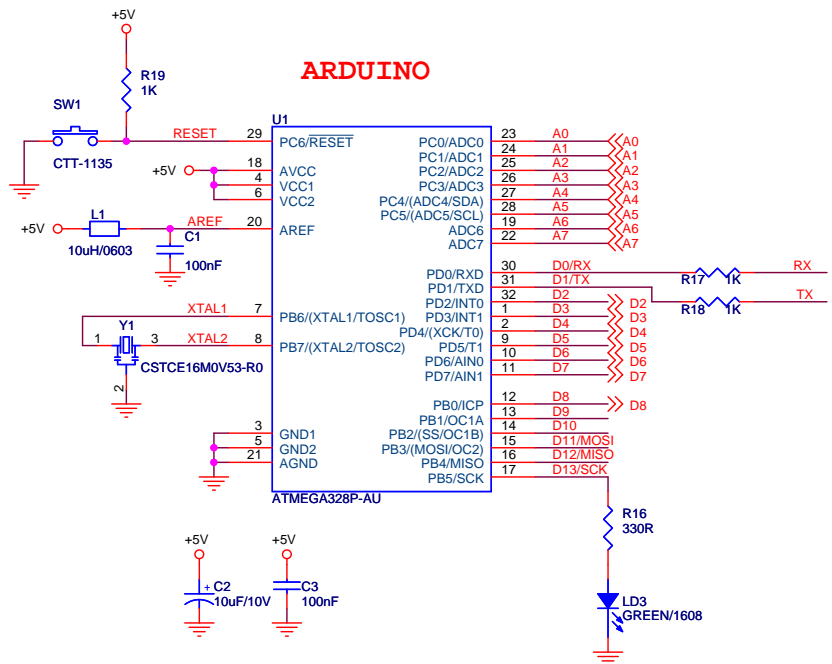
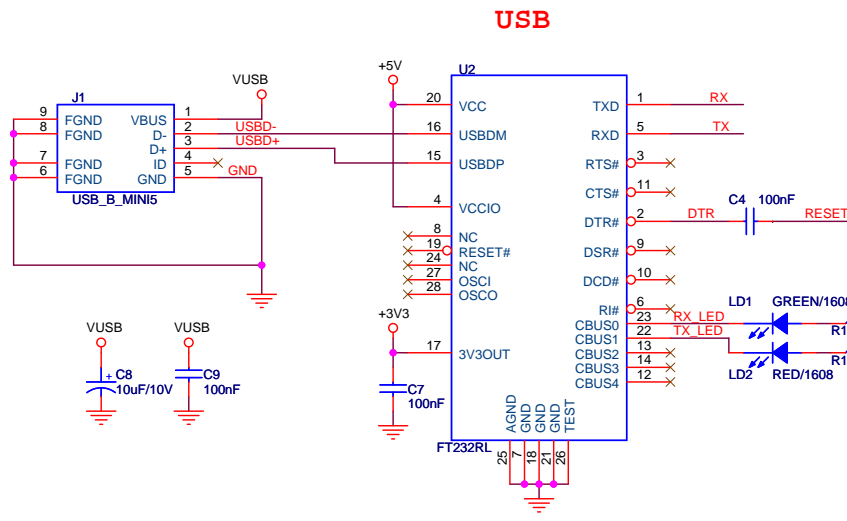


# INPUT & RELAY

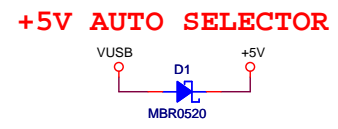
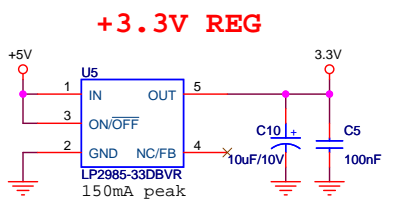
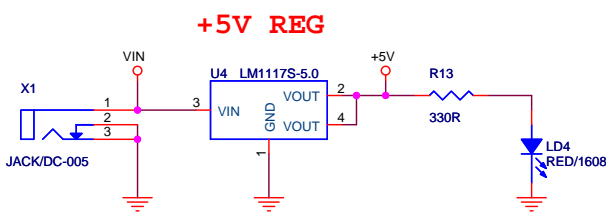
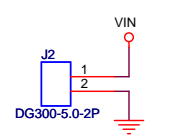
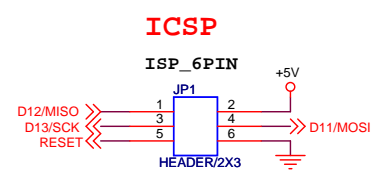
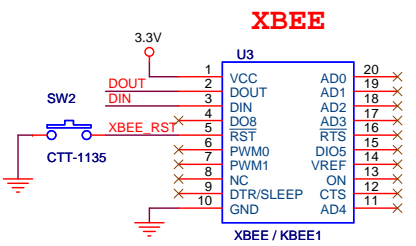
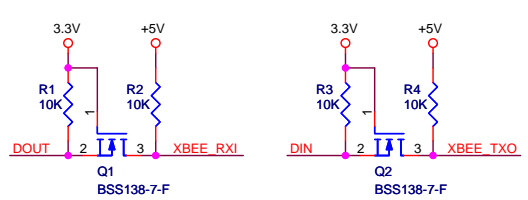



NEROTECH		
NA3510, 15, Gyeongin-ro 53-gil Guro-Gu, Seoul, Korea		
		
Title		
SMART-RELAY(CH2)		
Size	Document Number	Rev
B	SMART-RELAY(CH2)	A
Date:	Wednesday, December 14, 2016	Sheet 1 of 2

# ARDUINO NANO & XBEE



- 1) UART 모드
- 2) DLINE 모드



NEROTECH		
NA3510, 15, Gyeongin-ro 53-gil Guro-Gu, Seoul, Korea		
		
Title <b>SMART-RELAY(CH2)</b>		
Size B	Document Number SMART-RELAY(CH2)	Rev A
Date: Wednesday, December 14, 2016	Sheet 2	of 2